

ASSEMBLY INSTRUCTIONS

FACADE PROFILES

219 Lamella SE



BEFORE YOU BEGIN

Fire Applications and Classification

- The 219 LAMELLA SE **façade profiles** can be safely used as cladding for single-storey and multi-storey houses.
- They are classified in **Fire Reaction Class E**. For taller buildings, consultation with a fire specialist and installation in accordance with **the Fire Safety Solution is required**.

Design constraints

- The TERAFFEST® **material** is not intended to be load-bearing.
- Accessories (lighting, downpipes, etc.) must not be anchored only to the cladding profiles.

Tolerance and dilatation

- Manufacturing tolerance: width $\pm 2\text{mm}$, thickness $\pm 1\text{mm}$, length $\pm 10\text{mm}$.
- Maximum longitudinal deflection: **5 mm/m**.
- Profiles and rails expand and contract under the influence of temperature , \rightarrow always observe the prescribed **expansion gaps**.


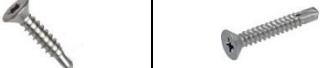
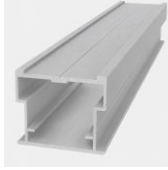
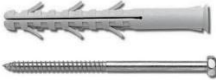
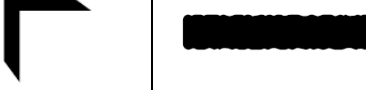

Storage and use

- TERAFFEST® products are mainly designed for **outdoor use**.
- Store on a dry, level, stable surface before assembly.

Tools

- Use the same tools as for hardwood: circular **saw**, **drill**, **cordless screwdriver**, **tape measure**, **spirit level**, **pencil**, **rubber mallet** and **angle**.

APPROXIMATE MATERIAL CONSUMPTION

	Recommended product	Illustrative photo	Quantity per 1 m2
Facade profile	219 LAMELLA SE		5 m/m2
Anchoring of façade profiles	Stainless steel screw A2 TEX 3.9 x 16 mm		7.1 pcs/m2
	Stainless steel screw A2 TEX 3.9 x 25 mm		According to the complexity of the project
Façade joist	AL joist 30 (AL-SMART joist 25)		1.4 bm/m2
Anchoring of façade joists	According to the thickness of the thermal insulation – e.g. Frame dowel RMS 8x160mm + screw with hexagonal head		2 pcs/m2
Finishing and Corner boards	Corner board 50 SE		According to the complexity of the project
	Edge board 70 SE		
Other anchors (edges etc)	FASADO screw 4.8 x 34 mm TEX Black		

1. INSTALLATION OF FAÇADE SUPPORTS

Basic rules

- First, the joists are installed, then the façade cladding.
- The wall must support min. **13–14 kg/m²**.
- For insulation over **20 cm**, always consult with a designer/structural engineer.

Joists used

- Aluminium joists **AL joist 30** or **AL-SMART joist 25**.
- Alternative: wooden slats **30 × 50 mm**.

Orientation and spacing of joists

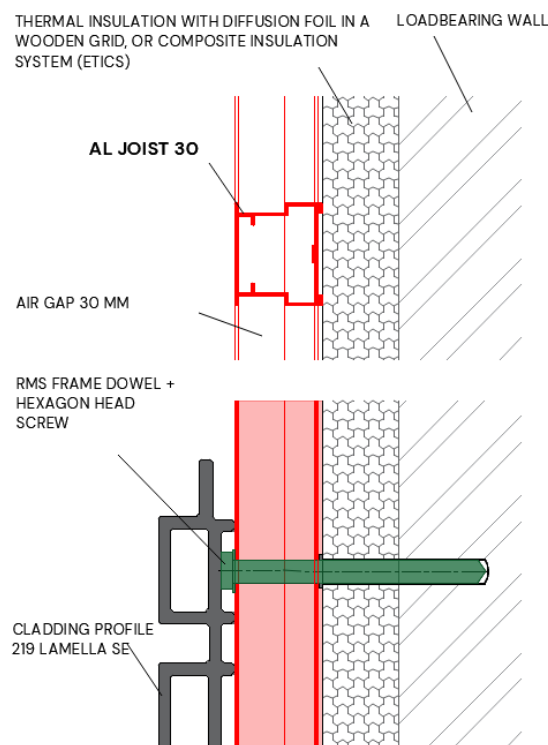
- The façade profiles of **219 LAMELLA SE** are mounted mainly **vertically**, i.e. the supports horizontally (it is also possible to install 219 LAMELLA SE horizontally).
- Joist spacing **600–800 mm**.
- Each profile is supported by joists **at least 3 points**.

Anchoring of joists

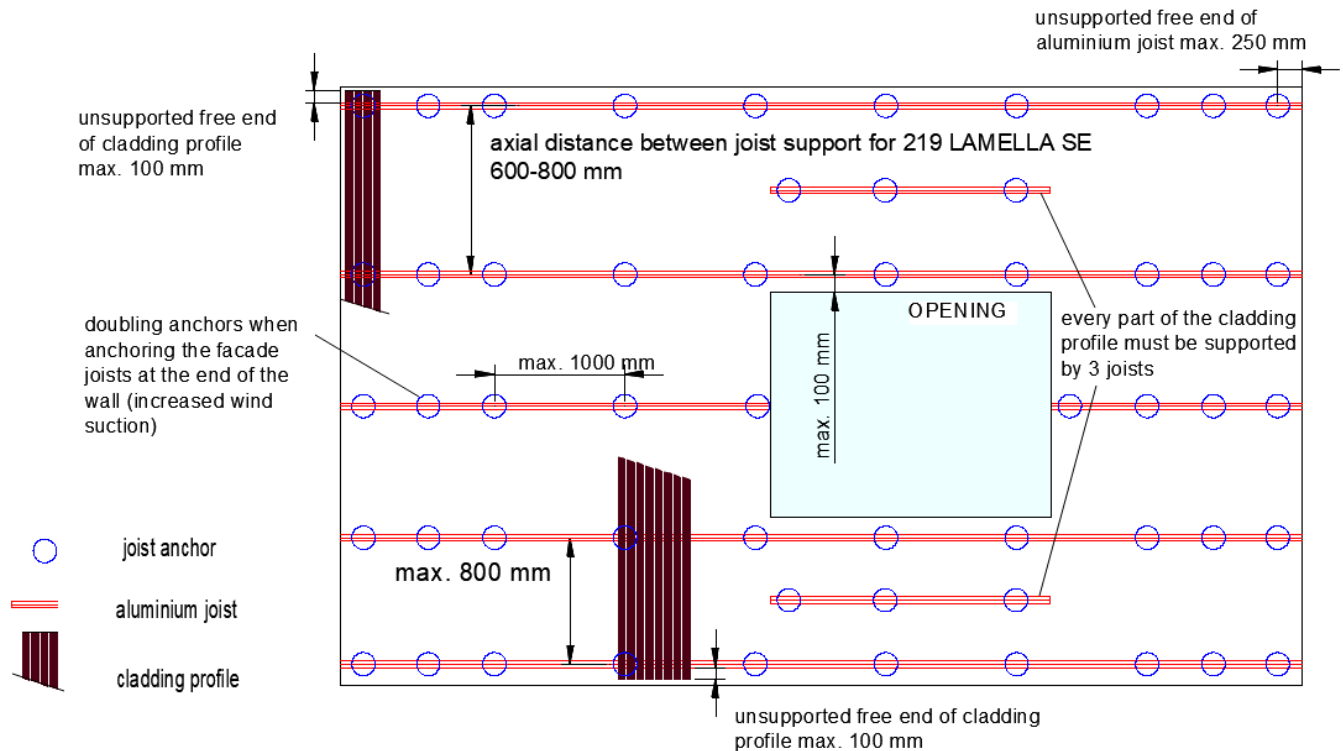
- Anchor through the insulation to the supporting structure.
- Anchor distance max. **1 m**. (according to the static assessment)
- In the edges and corners, double the number of anchoring elements.
- Max. free overhang of the joist **250 mm**.
- It is recommended to use dowels with a thermal bridge break.

Other recommendations

- Do not anchor to the waterproofing membrane. The first rack can be moved up to **30 cm above the ground**.



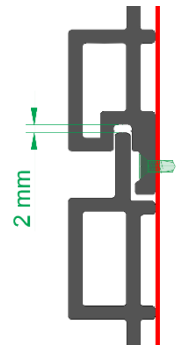
Mounting scheme of aluminium joists for 219 LAMELLA SE - vertical wall view



2. INSTALLATION OF FAÇADE PROFILES 219 LAMELLA SE

Anchoring principles

- The composition width (effective width) of the 219 LAMELLA SE is **200 mm**.
- Assembly begins with the preparation **of the bottom row of starter clips**, into which the individual slatted plates are "attached".
- The screws are anchored only on one side, the other edge is inserted; leave **an expansion gap of 2 mm in the joint**. (Tapered profiles can be anchored from both sides.)
- Max. free profile length = **1000 mm**; keep a gap of **3 mm** when connecting.
- Cover the corners with a **Corner board 50 SE**, the lining and lintel with an **Edge board 70 SE** according to the depth of the opening.



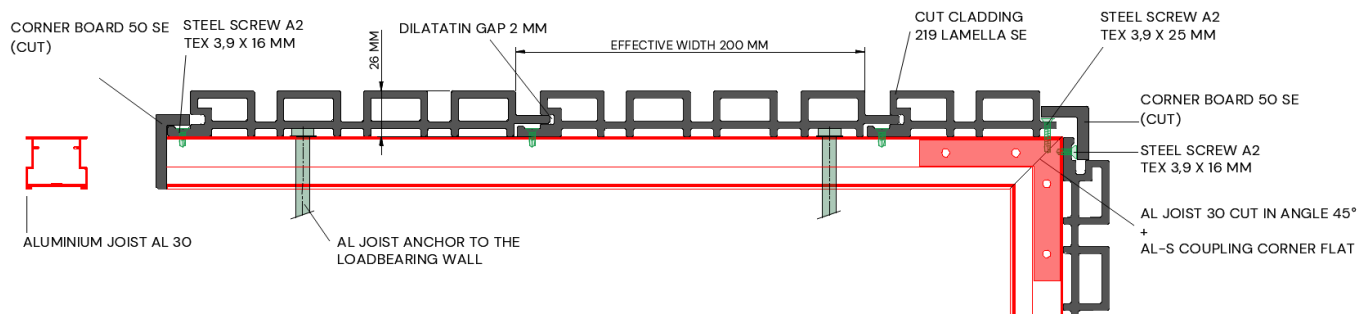
Fasteners

- Standard anchoring: **Stainless steel screw A2 TEX 3.9 × 16 mm**.
- For anchors into black rib or end pen: **Stainless steel screw A2 TEX 3.9 × 25 mm**.
- Corner and Edge boards: e.g. **FASADO TEX Black 4.8 × 34 mm**.

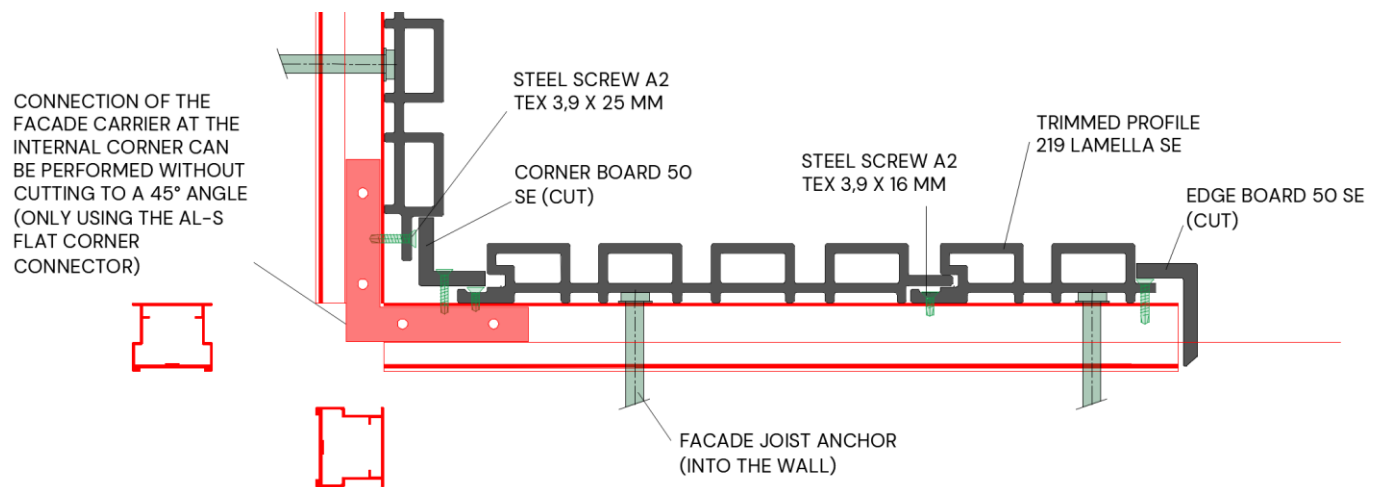
Pre-drilling and tightening of screws

- Pre-drilling is necessary to facilitate the installation and **to enable expansion movements of the façade profiles**.
- Façade profiles: drill with min. **2 mm larger** than the screw (for TEX screws \varnothing 6 mm).
- Aluminium joists: drill **bit \varnothing 2.5–3 mm**.
- Tighten the screws with a torque of **max. 4 kN**.

Detail of the beginning of the cladding and the outer corner



Detail of the inner corner and the end of the cladding



Release date 3/12/2025

WPC – WOODPLASTIC a.s., V celnici 1034/6, 110 00 Prague 1, Czech Republic, Company ID: 08920354, VAT ID: CZ08920354, phone: +420 800 720 288, e-mail: wpc@woodplastic.cz, www.terafest.cz; The company is registered in the Commercial Register maintained by the Municipal Court in Prague, file number B 25100.